



Creating Excellence: A Public Forum with the Chancellor's Inclusive Excellence Awardees

April 22, 2021 | 1 p.m.-2:30 p.m. PT

Program

1 p.m.

Welcome

Convening

Douglas Haynes, Vice Chancellor and Chief Diversity Officer, Office of Inclusive Excellence

Remarks

Howard Gillman, Chancellor

1:15 p.m.

Excellence Talks: *Why Does Inclusive Excellence Matter in My Work at UCI?*

"Lawyers Trained for Inclusive Excellence Provide Access"

Cindy Archer, Professor of Lawyering Skills
School of Law

"De'CYFER'ing Adversity by Creating Ripples: The Development of GRIT with the Next Gen of Health Care Providers"

Dawn Bounds, Assistant Professor of Nursing
Sue & Bill Gross School of Nursing

"A Recipe for Raising Bien Educado Kids"

Gustavo Carlo, Professor of Education
School of Education

"Creating Inclusive Digital Futures for Aging and Disability"

Anne Marie Piper, Associate Professor of Informatics
Donald Bren School of Information and Computer Sciences

"Opportunity Starts Here!"

Julie Washington, Professor of Education
School of Education

2:15 p.m.

Recognizing Incoming Awardees

Vice Chancellor Douglas Haynes

About the Chancellor's Inclusive Excellence Awardees



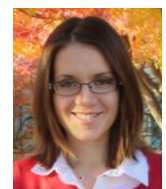
Cindy Thomas Archer is a professor of lawyering skills in the School of Law. A former faculty member at Loyola Law School for nearly 20 years, she served as a former associate dean for clinical program and experiential education and clinical professor of law. Her research examines legal analysis and communication, experiential legal education, civil litigation practice, and various aspects of lawyer-client relationship, a lawyer's professional responsibility and access to justice, client interviewing and counseling skills, and cultural humility in client representation, and inclusive excellence in legal education.



Dawn Bounds is assistant professor in the Sue & Bill Gross School of Nursing whose research is focused on the risk and resilience of youth with socially complex needs. Her research addresses gaps in both policy and practice related to commercial sexual exploitation exposing the social factors that contribute to the exploitation of vulnerable people. As a certified psychiatric mental health nurse practitioner, she has worked with children and adolescents in a variety of settings including inpatient psychiatry, partial hospitalization, juvenile detention, homeless shelters, and school-based health. She is an alumnus and National Advisory Council member of the prestigious SAMHSA Minority Fellowship Program at the American Nurses Association. Prior to joining UCI in 2020, she served on the faculty at Rush University where she held a joint appointment in the School of Nursing and in Psychiatry & Behavioral Sciences.



Gustavo Carlo is a professor in the School of Education and currently serves as a member of the SRCD Governing Council, as associate editor of the *International Journal of Behavioral Development*, and as co-editor of the upcoming *APA Handbook of Adolescent Development*. He was the Millsap Professor of Diversity and Multicultural Studies in the Department of Human Development and Family Science at the University of Missouri. His primary research interest is understanding prosocial development and well being in culturally-diverse children and adolescents. Many of his projects focus on U.S. ethnic/racial groups, including Latino/a youth and families.



Alexandra Florea joins UCI in July 2021 as professor in the Department of Mathematics in the School of Physical Sciences. Her research interests revolve around Analytic Number Theory, using tools from analysis, algebra and geometry to study questions about integers. Specifically, she investigates the properties of mathematical objects called "L-functions". Since 2018, she has been a Ritt Assistant Professor and NSF fellow at Columbia University.



Jamelia Morgan joins UCI in July 2021 as assistant professor in the School of Law. Her research and teaching focus on the intersections of race, gender, disability, and criminal law and punishment. Her current work examines the development of disability as a legal category in American law, disability and policing, overcriminalization and regulation of what are labeled physical and social disorders, and the constitutional dimensions of the criminalization of status. A faculty member from the University of Connecticut, she has served as a civil rights litigator at the Abolitionist Law Center, an Arthur Linman Fellow with the ACLU National Prison Project, and as an intern with the NAACP Legal Defense and Educational Fund.



Tiara Na'puti joins UCI in July 2021 from the University of Colorado, Boulder, as assistant professor in the Department of Global and International Studies in the School of Social Sciences. Her research focuses on contemporary Chamoru (Indigenous people of Guam/Mariana Islands), activism in relation to US military installations, and the militarization of Indigenous territories more broadly. Her community engagement and social justice advocacy includes working with organizations addressing immigration rights and issues facing Pacific Islander populations, including decolonization. She has also joined several delegations to testify at the United Nations Special Political and Decolonization Committee (4th Committee) on the political status of Guåhan/Guam.



Anne Marie Piper is an associate professor in the Department of Informatics in the Donald Bren School of Information & Computer Sciences. Her research in human-computer interaction focuses on creating equitable and inclusive digital experiences for people of all ages and abilities. Much of her work involves building and studying new technologies for individuals with disabilities and older adults. Her research and teaching has been recognized with an NSF CAREER Award, multiple Best Paper awards, the Simon Award for Teaching Excellence at Northwestern University, and a UC-San Diego Interdisciplinary Scholar Award.



Carolina Valdivia joins UCI in July 2021 as an assistant professor in the Department of Criminology, Law and Society in the School of Social Ecology. Her current research project explores the consequences of heightened immigration enforcement on undocumented immigrants and their families. She explores the ways through which various forms of legal and social exclusion impact the lives of immigrant youth and their families, including their educational trajectories, mental health, and political participation.



Julie Washington is a professor in the School of Education. She is a speech-language pathologist and is a fellow of the American Speech-Language-Hearing Association. She directs the UCI Learning Disabilities Research Innovation Hub funded by the National Institutes of Health, Eunice Kennedy Shriver National Institute on Child Health and Human Development. She is also director of the **Dialect, Poverty and Academic Success** lab at UCI. Her research is focused on the intersection of literacy, language variation, and poverty. In particular, her work focuses on understanding the role of cultural language variation on assessment, identification of reading disabilities in school-aged African American children, and on disentangling the relationship between language production and comprehension on development of reading and early language skills for African American children growing up in poverty.

[#ActforInclusion](https://inclusion.uci.edu/action-plan/) (<https://inclusion.uci.edu/action-plan/>)

For more information, please visit Chancellor's Inclusive Excellence Awards at: <https://inclusion.uci.edu/chancellors-inclusive-excellence-awards/>